

## PRODUCT SPECIFICATION

MODEL NO	HD06VCRH 7B
INPUT	12VDC
DESCRIPTION	MICROWAVE SENSOR FOR MAX 15M HEIGHT
CERTIFICATE	IN ACCORDANCE WITH CE ROHS
VERSION	V2.0

## MICROWAVE SENSOR FOR MAX 15M HEIGHT WITH ZHAGA BOOK 18 RECEPTACLE

DONGGUAN HAIYUE INTELLIGENT TECHNOLOGY CO.,LTD  
13th Floor, C1 Building, Songshan Lake Intelligent Valley,  
Liaobu Town, Dongguan City, 523808, Guangdong.  
Contact us [info@haisensz.com](mailto:info@haisensz.com)  
[www.haisensz.com](http://www.haisensz.com)

Series Work of Art  
All Rights Reserved by HAISEN

WRITTEN BY	夏勇
CHECKED BY (R&D)	陈启东
CONFIRMED BY (SALES)	周慕
DATE	2023.10.25

# Features & Benefits



To match with Zhaga 18 Base



To match with Z10 Base

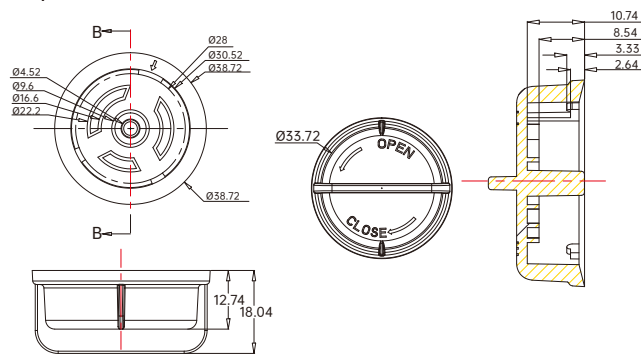
## HD06VCRH 7B

- With Zhaga Book 18 Receptacle and Z10 Receptacle.
- Microwave Sensor for max 15M Height.
- Bi-level Dimmable, Daylight Priority.
- Remote Control.

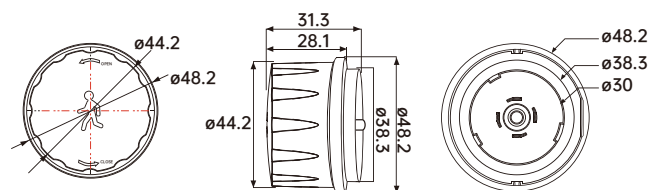


## Dimensions Unit:mm

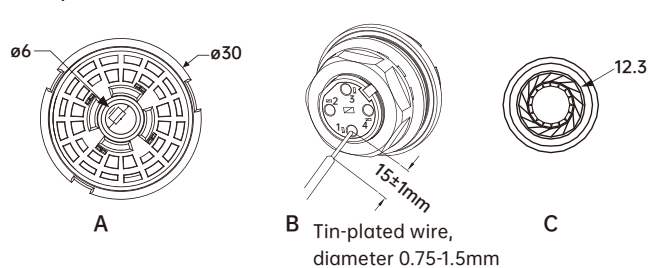
Cap



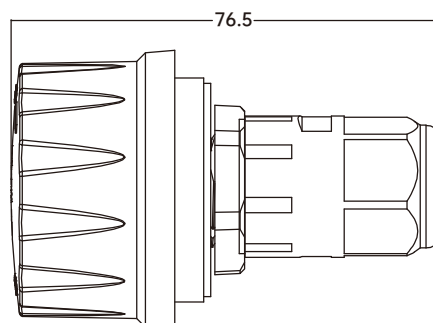
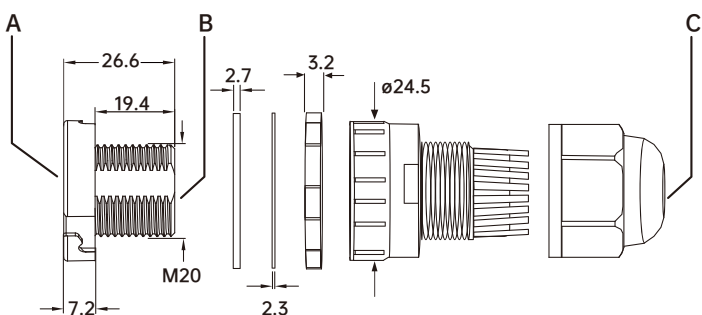
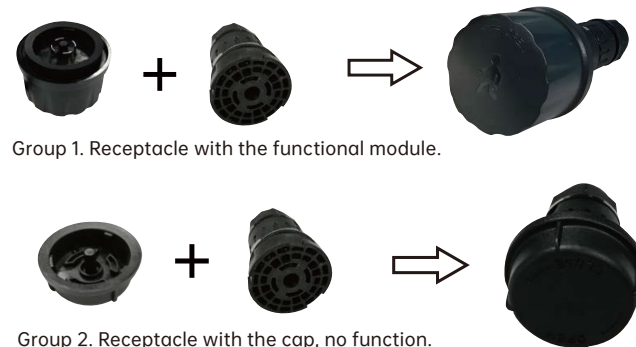
Module



Receptacle



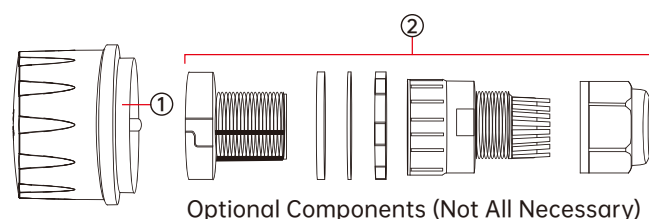
Components



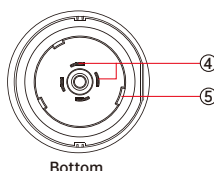
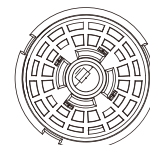
# Parameters

Model NO.		HD06VCRH 7B
FUNCTION PARAMETER	Frequency	5.8GHz±75MHz
	Microwave Power	<0.3mW
	Daylight Priority Function	Daylight threshold as 120Lux/80Lux/50Lux/30Lux, standby period as +∞ and standby dimming level as 10%/20%/30%
	Detection Area	25%/50%/75%/100%
	Daylight Threshold	2Lux/10Lux/30Lux/50Lux/80Lux/120Lux/Disable
	Standby Dimming Level	10%/20%/30%/50%
	Standby Period	0s/10s/30s/1min/5min/10min/30min/60min/+∞
	Holdtime	5s/30s/1min/3min/5min/10min/20min/30min
	Control	Standard Partner HD05R, the LCD screen display remote (purchase seperately)
	Dimming Play	Manually dim 10%~100% in ON/OFF mode, 60%~100% in sensor mode
SENSOR INFORMATION	Installation Height	Max.15m/49.21ft Ceiling Mounted
	Detection Distance	Max,ø16m/52.49ft Ceiling Mounted
	Detection Angle	30°-150° Without Glass Cover
	Warranty	5 Years
INPUT	Input Range	10.5-15V DC
	Current	<30mA
OUTPUT	Signal	DIM 0-10V
	Stand-by Power	<30mA Power Consumption
	Connection	Zhaga Receptacle
ENVIRONMENT	Storage Temp	-20°C~+60°C
CERTIFICATE & STANDARDS	Environmental Requirements	In accordance with CE ROHS
	IP Rating	IP65

# Mechanical structure

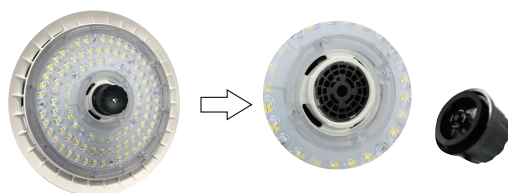


- ① Sensor head
- ② Zhaga Receptacle Components
- ③ Zhaga Book 18 Receptacle
- ④ Metal Connection Pins(4pcs)
- ⑤ Mounting Port



# Installation

Inside the UFO



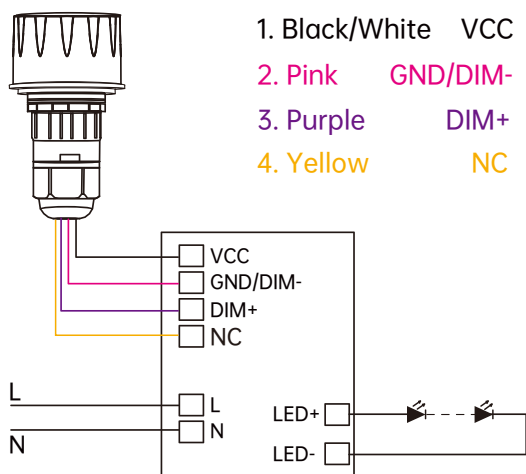
Beside the UFO



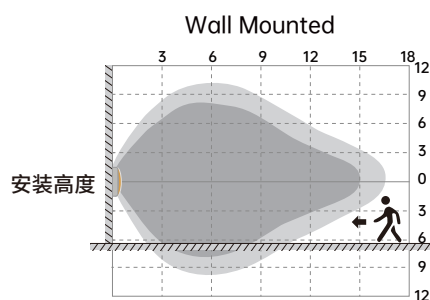
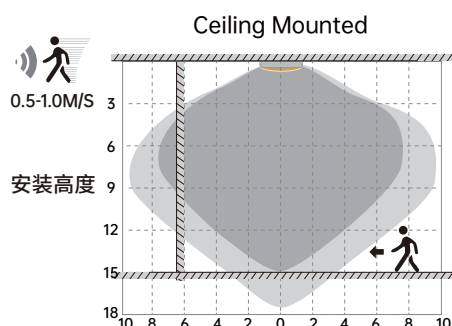
Pin to Mount



# Wiring Diagram



# Detection Patterns



Highest mounting height is 15m

This figure indicates the maximum distance at the highest mounting height with 100% sensitivity.

Well Detected Area      Possibly Detected Area

# Performance

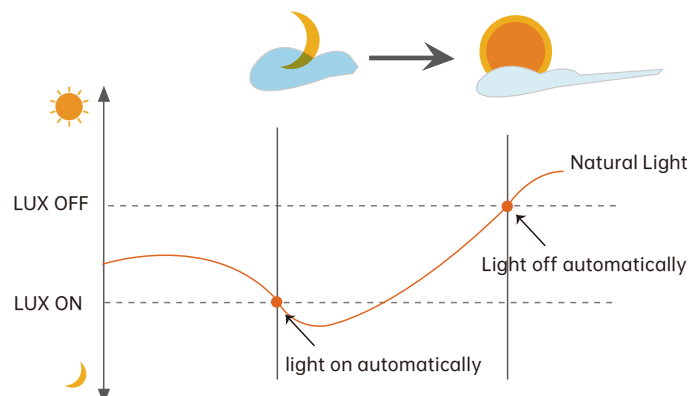
## Dusk/Dawn sensor:

Dual-PD technology brings a fully automatic dusk/dawn sensor which can tell the difference between natural light and LED light, to ensure the light will be off when needed.

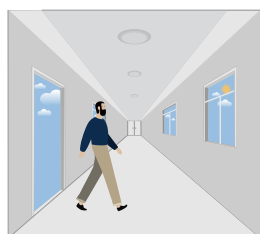
With Daylight priority function, HD06VCRH 7B is able to differentiate artificial light brightness from natural light after installed inside the fixture, and automatically turn off light when ambient brightness exceeds preset lux level.

## Precondition of Daylight priority:

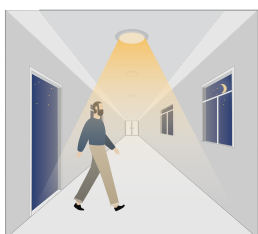
1. Standby period is  $+\infty$ ;
2. Standby dimming level is on 10%, 20% or 30%;
3. Daylight threshold is on 30Lux, 50Lux, 80Lux or 120Lux.



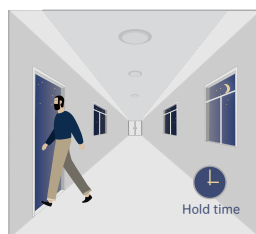
## 1. Automatically ON/OFF function



With sufficient daylight, even when motion detected, light remains OFF.



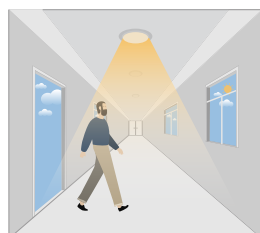
With insufficient daylight, the sensor turns light ON when motion gets detected.



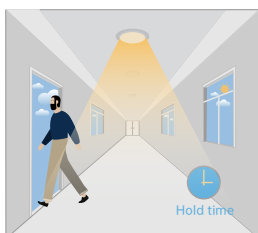
The sensor turns OFF light automatically after the holdtime when there's no motion detected.

## 2. Daylight Disable

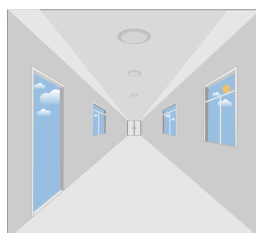
When daylight threshold is preset as "disable", the sensor turns light ON when motion gets detected, and OFF after holdtime.



The sensor turns light ON when motion gets detected.

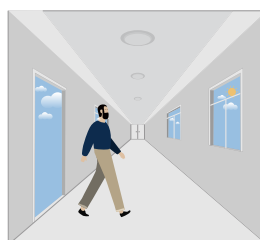


The sensor keeps light ON for holdtime period after motion leaves.

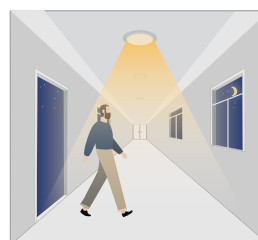


The sensor turns OFF light automatically after the holdtime.

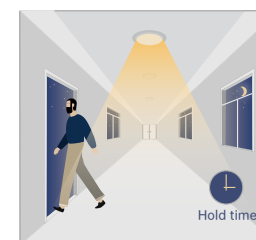
## 3. Corridor Function, Bi-level Dimmable



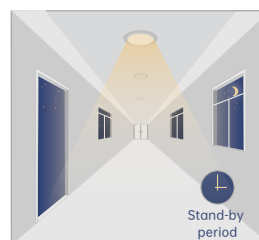
With sufficient daylight, the sensor keeps light OFF even motion gets detected.



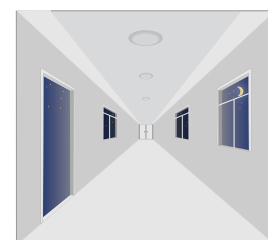
With insufficient daylight, the sensor turns light ON when motion gets detected.



After there's no motion detected, the sensor keeps light ON 100% for holdtime.



After holdtime, sensor dims light to standby dimming level for standby period.



The sensor turns OFF light automatically after the standby period when there's no motion detected.



## Attention

1. The sensor should be installed by qualified electrician and ensure power is OFF before installation.
2. Please read the instruction carefully before using the product and keep it well for other users to read any time.
3. We reserve the right to modify any incorrect text, image and technical parameters.
4. Any unauthorized modification is forbidden. Otherwise all guarantees will be immediately invalid.
5. Product could be optimized without prior notice.

## APPLICATION NOTES

1. Suitable for indoor application, half/completely outdoor environment conditions might be captured as moving signals to trigger the sensor.
2. Suitable for ceiling mount installation, adjust sensitivity properly if it's installed on side-wall because it gets more sensitive.
3. Adjust sensitivity properly when the sensor is applied in small/narrow/metal-built/with metal spaces.
4. Microwave sensor can't be placed under/inside metal shell; Microwave module must directly face the detection area with edge lower than light fixture.
5. Keep the sensor away from vibration equipments, air-conditioning outlets, smoke extractors alike conditions to avoid unwanted trigger.
6. Keep the sensor module away from AC input and DC output to avoid high/low frequency signal interference.
7. At least 2m/6.5ft distance between microwave sensors; 1.5m/4.9ft between the sensor and other wireless devices such as routers to avoid possible radio interference.
8. Daylight testing delivered in bright day without shadow or specially designed lampshade or lens.
9. Dimming performance differs when connected to different drivers; If the driver can't completely turn OFF, sensor can't either.
10. Input power voltage must be stable with float less than 10%.
11. The first time powered ON sensor, light will be ON 100% for about 10S then dims to standby level or OFF.
12. Distance detection is delivered by testing person about 165cm in open area as reference, the result differs by size and speed of moving objects, mounting height and real-life situation.